

# Gantry Crane Trading, LLC

[www.gantrytrading.com](http://www.gantrytrading.com)

609-263-6900

ICW= Inside Clear Width Max Hook= Maximum lift Wheelbase= Hook to Hook

**Traversing Hook** [GCT4196](#) **205** Tons **ASCOM CLS205** I.C.W. 60 Max Hook: 40'0" Wheelbase 30  
*New in 2017 under 7000 hours. Volvo tier 4 power. Twin Disc PTO. Bonfiglioli wheel drives. All wheel steer (Siemens electronic). Autec wireless remote control. Full cab with heat & AC. On one project since new, ready to go winter '24*

**Video** [Photos and video on request](#)



**Traversing Hook** [GCT4110](#) **200** Tons **MiJack MJ 200** I.C.W. 29'9" Max Hook: 36'5" Wheelbase 24'  
*Ready to go. Call for further details*

**Video**



**Traversing Hook** [GCT4150](#) **150** Tons **ASCOM CLS150** I.C.W. 60 Max Hook: 40'0" Wheelbase 30  
*Volvo tier 4 power. Twin Disc PTO. Bonfiglioli wheel drives. All wheel steer (Siemens electronic). Autec wireless remote control. Full cab with heat & AC. 7 years old, one project.*

**Video** [Photos and video on request](#)



**Traversing Hook** [GCT4199](#) **100** Tons **MiJack MJ100** I.C.W. 40 Max Hook: 40 Wheelbase 40  
*Nice 8 tire MJ100. Cummins power. Fresh service. Spreader in photos not included. Lots of new pumps, drives etc. Video on request.*

**Video** [On Request](#)



**Traversing Hook** [GCT4121](#) **80** Tons **MiJack MJ80B** I.C.W. 71'7" Max Hook: 29'4" Wheelbase 24'  
*Finishing job now, ready to ship July. Machine was a 100+ ton de-rated to 80 ton due to width... Very low hours, used to as back up to 150 ton machine. **EXCELLENT OPPORTUNITY TO BUY A BIG MIJACK FOR SHORT MONEY!***

**Video** <https://youtu.be/aDRmG8MEeeQ>



**Traversing Hook** [GCT4195](#) **60** Tons **MiJack 1000AI** I.C.W. 39'7" Max Hook: 29'9" Wheelbase 30  
*Purchased for a job in 2022 and since then put on a new alternator, supercharger pump drive shaft, 2x remanufactured hydraulic pumps, heater box, fuse panel, dashboard, 75% hydraulic hoses, lights, cables, tires. Looking for offers.*

**Video**



# Gantry Crane Trading, LLC

[www.gantrytrading.com](http://www.gantrytrading.com)

609-263-6900

ICW= Inside Clear Width Max Hook= Maximum lift Wheelbase= Hook to Hook

**Traversing Hook** [GCT4014](#) **50** Tons **MiJack 750D** I.C.W. 14'5" Max Hook: 17'4" Wheelbase 17

*Dual trolley with very flexible spreader system. In very good condition, been replaced with larger machine.*

*Video coming soon*

**Video** [https://youtu.be/eaYFLb1\\_9Jw](https://youtu.be/eaYFLb1_9Jw)



**Traversing Hook** [GCT4153](#) **50** Tons **Mijack 750D** I.C.W. 40 Max Hook: 25 Wheelbase 24

*Very low hours on rebuilt engine. Good working order. Looking for offer. Plant closure. Located Great Lakes. Awaiting video and full set of photos.*

**Video** [https://youtu.be/F0rQhugrk-Q?si=W\\_EFOjSqdHa2eBWf](https://youtu.be/F0rQhugrk-Q?si=W_EFOjSqdHa2eBWf)



**Traversing Hook** [GCT4108](#) **50** Tons **Shuttlelift ISL50** I.C.W. 41 Max Hook: 28 Wheelbase 33

*Solid machine for plant with a staff of certified welders! Has over \$100k in new parts ready to install, low hour factory JD engine (less than one year) If you are blessed with structural steel repair talent, this machine is a home run. Great Lakes*

**Video**



**Traversing Hook** [GCT4192](#) **50** Tons **MiJack 750D** I.C.W. 20'7" Max Hook: 33'1" Wheelbase 24'0"

*Very nice dual trolley with spreader system handling concrete boxes, Recent annual inspection. Excellent for handling containers, tanks etc.*

**Video** **Soon**



**Traversing Hook** [GCT4197](#) **50** Tons **MiJack 750D** I.C.W. 59'5" Max Hook: 24'10" Wheelbase 24

*Needs hoses and some odds'n'ends. One of a pair. Our mechanics disabled it, so they ran it. "It's rough, but it works, it's not cracked"*

*Good News is it is already dismantled saving you a ton of \$\$\$.. Yes it needs some TLC. Located Florida*

**Video** **None**



**Traversing Hook** [GCT4169 -](#) **40** Tons **Ropco HD1080ST** I.C.W. 52 Max Hook: 40 Wheelbase 17

*Been used to handle 20' shipping containers. Business switched over to forklifts. This is a industrial machine with a removable container spreader that can be discarded. Has two operator stations. Ready to work for under \$20k!*

**Video**



# Gantry Crane Trading, LLC

[www.gantrytrading.com](http://www.gantrytrading.com)

609-263-6900

ICW= Inside Clear Width Max Hook= Maximum lift Wheelbase= Hook to Hook

**Traversing Hook** [GCT4166](#) **40** Tons **Drott 650C** I.C.W. 40'2" Max Hook: 32'0" Wheelbase 24'0"

*Plant closure. Working daily. **SOLD! Others available***

**Video** <https://youtu.be/Ocsk-ZDi1K8>



**Traversing Hook** [GCT4194](#) **40** Tons **MiJack 650C** I.C.W. 39' Max Hook: 25'?? Wheelbase 20'

*Awaiting dimensional details. Engine has less than 3300 hours. Southern Calif*

**Video**



**Traversing Hook** [GCT3970](#) **32** Tons **Drott/MiJack 650AI** I.C.W. 31'4" Max Hook: 28'10" Wheelbase 24'

*Good working order. Looking for offer. Plant closure. Located Great Lakes. Awaiting video and full set of photos.*

**Video**



**Traversing Hook** [GCT3971](#) **32** Tons **Drott/MiJack 650AI** I.C.W. 31'4" Max Hook: 24'10" Wheelbase 30'7"

*Good working order. Looking for offer. Plant closure. Located Great Lakes. Awaiting video and full set of photos.*

**Video**



**Traversing Hook** [GCT4117](#) **17** Tons **Drott/MiJack 250B** I.C.W. 24' Max Hook: 21' Wheelbase 20'

*Good machine. Originally from a precast yard. Then spent 10 years stationary (as in they never moved it), two years doing what it was designed to do for a rigging outfit. Ready to go. Includes pipe spreader. Video coming*

**Video**



**Rail Mount** [GCT3961](#) **40** Tons **Washington Rail Mount** I.C.W. 38' Max Hook: 18'8" Wheelbase

*Project complete, will be dismantled Nov-Dec 20. Recent inspection available, also all drawings etc. Located Northeast. No hour meter. Just inspected Oct 2020 all good.*

**Video**



# Gantry Crane Trading, LLC

[www.gantrytrading.com](http://www.gantrytrading.com)

609-263-6900

ICW= Inside Clear Width Max Hook= Maximum lift Wheelbase= Hook to Hook

**Rail Mount** [GCT3684](#) **35** Tons **North American Rail Mount** I.C.W. 87' Max Hook: 24'3" Wheelbase

*Four available. New in 2016 Used on one large bridge re-decking job. Now dismantled ready to go. 460v Generators are available. Call for full details!*

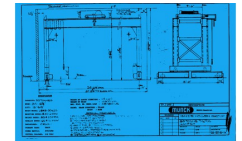
**Video** [http://i605.photobucket.com/albums/tt139/Gantrytrader/GCT3684\\_zpsto5icg.jpg](http://i605.photobucket.com/albums/tt139/Gantrytrader/GCT3684_zpsto5icg.jpg)



**Rail Mount** [GCT3588](#) **30** Tons **MUNCK Rail Mount** I.C.W. 34 Max Hook: 15'6" Wheelbase 15

*Rail mounted self propelled electric single hook. Ready to ship, located near Detroit*

**Video**



**Rail Mount** [GCT3820](#) **27.5** Tons **CRS Single hook track** I.C.W. 45 Max Hook: 20 Wheelbase 21'8"

*Single hook track mounted diesel generator or can be wired. Used on one bridge job. New in June 2018, will be ready to ship July 2019. Extreme Climate pkg. Have full drawings also Price is for the pair, will sell separate*

**Video** <https://youtu.be/aWY6S2mmOLg>



**Non-Traversing** [GCT4149 -](#) **300** Tons **Shuttlelift SL-300** I.C.W. 48 Max Hook: 31.5 Wheelbase 41.5

*950 Original hours. Used for one month on one job, we sold and owner has given up waiting on permits. Properly stored by our mechanics, ready to ship and put to work.*

**Video**



**Non-Traversing** [GCT3958](#) **100** Tons **Deal 80/8** I.C.W. 22.3 Max Hook: 31 Wheelbase

*2018 Bridge segment hauler with 4500 hours. Like new. 100 ton cap*

**Video** [https://youtu.be/q2Wt\\_2T\\_RKY](https://youtu.be/q2Wt_2T_RKY)



**Non-Traversing** [GCT4171](#) **75** Tons **Marine TL 70BFM** I.C.W. 22? Max Hook: 22? Wheelbase

*Nice machine out of marina. Has some of the typical rust, but nothing serious. Has Ford 300 gas power. Has adjustable lift points at all four corners. Ready to ship immediately. Dimensions not verified*

**Video**



# Gantry Crane Trading, LLC

[www.gantrytrading.com](http://www.gantrytrading.com)

609-263-6900

ICW= Inside Clear Width Max Hook= Maximum lift Wheelbase= Hook to Hook

**Non-Traversing** [GCT3709](#) **60** Tons **Tammi M1200U** [I.C.W. 22](#) [Max Hook: 22](#) [Wheelbase 22](#)  
*Dimensions to be verified. Solid machine, very little rust. Four independent hoists. Load Bars. Newer Ford V-8 power, easy to conver to LP Two new tires, all are good.*

**Video** <https://youtu.be/trpeD6zvZnE>



**Non-Traversing** [GCT4046](#) **50** Tons **Kleeco SP50H** [I.C.W. 20](#) [Max Hook: 22'6"](#) [Wheelbase 21](#)  
*Nice late model machine, four hoist, independent controlled pick points. Just got back to resell, job completed..*

**Video**

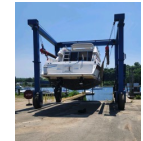


**Non-Traversing** [GCT4159](#) **50** Tons **Tammi** [I.C.W.](#) [Max Hook:](#) [Wheelbase](#)  
*Dismantled, No engine.. Could be a great deal???????*

**Video**

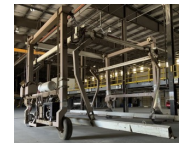
**Non-Traversing** [GCT4180](#) **25** Tons **Acme H25/4** [I.C.W. 17](#) [Max Hook: 18](#) [Wheelbase 17](#)  
*VERY NICE machine out of a marina. On fresh water many miles from salt. Very sweet machine! Ready to dismantle and ship tomorrow!*

**Video**



**Non-Traversing** [GCT4019](#) **20** Tons **Kleeco SP400HI** [I.C.W. 20](#) [Max Hook: 20](#) [Wheelbase 20](#)  
*Never spent a night outside. Late model with only 2800 hours. Set up for LP. Used for moving modular homes. No rust anywhere, has extra hydraulic capabilities from the grapple system as well. Video is sister machine*

**Video**



**Non-Traversing** [GCT4137](#) **20** Tons **Acme H20** [I.C.W. 16](#) [Max Hook: 16](#) [Wheelbase](#)  
*Nice non-traversing machine. Ready to go! Located Mid west- With spreader and cab. Handled large air conditioning units*

**Video**



# Gantry Crane Trading, LLC

[www.gantrytrading.com](http://www.gantrytrading.com)

609-263-6900

ICW= Inside Clear Width Max Hook= Maximum lift Wheelbase= Hook to Hook

**Non-Traversing** [GCT4140](#) **16.5** Tons **Shuttlelift SL-15** [I.C.W. 22](#) [Max Hook: 21](#) [Wheelbase 15](#)  
*360 Original hours since new. LP Gas Ford powered. Four Hoist with factory infinitely adjustable spreaders. Powered forward spreader. Looks like new. Dimensions are confirmed*

**Video** [https://youtu.be/5elk\\_Uj5QuE](https://youtu.be/5elk_Uj5QuE)



---

**Non-Traversing** [GCT4191](#) **15** Tons **Kleeco 15 - T** [I.C.W. 15](#) [Max Hook: 16](#) [Wheelbase](#)  
*Sweet freshwater machine with Perkins diesel power*

**Video** <https://youtu.be/fKNP5I7-anw>

