

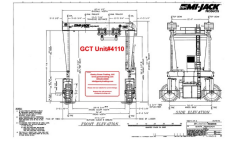
Gantry Crane Trading, LLC

www.gantrytrading.com

609-263-6900

ICW= Inside Clear Width Max Hook= Maximum lift Wheelbase= Hook to Hook

Traversing Hook [GCT4110](#) **200** Tons **MiJack MJ 200** I.C.W. 29'9" Max Hook: 36'5" Wheelbase 24'
Pricing/condition Details Coming..... Let me know you have an interest.



Video

Traversing Hook [GCT4150](#) **150** Tons **ASCOM CLS150** I.C.W. 60 Max Hook: 40'0" Wheelbase 30
(120 Under optional spreader). Volvo tier 4 power. Twin Disc PTO. Bonfiglioli wheel drives. All wheel steer (Siemens electronic). Autec wireless remote control. Full cab with heat & AC. On one project since new, ready to go winter '24



Video [Photos and video on request](#)

Traversing Hook [GCT4152](#) **100** Tons **MiJack MJ100** I.C.W. 50 Max Hook: 30 Wheelbase 24
Available November '24. Put you name on it now!



Video

Traversing Hook [GCT4121](#) **80** Tons **MiJack MJ80B** I.C.W. 71'7" Max Hook: 29'4" Wheelbase 24'
*Finishing job now, ready to ship July. Machine was a 100+ ton de-rated to 80 ton due to width... Very low hours, used to as back up to 150 ton machine. **EXCELLENT OPPORTUNITY TO BUY A BIG MIJACK FOR SHORT MONEY!***



Video <https://youtu.be/aDRmG8MEeeQ>

Traversing Hook [GCT4014](#) **50** Tons **MiJack 750D** I.C.W. 14'5" Max Hook: 17'4" Wheelbase 17
Dual trolley with very flexible spreader system. In very good condition, been replaced with larger machine. Video coming soon



Video https://youtu.be/eaYFLb1_9Jw

Traversing Hook [GCT4153](#) **50** Tons **Mijack 750D** I.C.W. 40 Max Hook: 25 Wheelbase 24
Very low hours on rebuilt engine. Good working order. Looking for offer. Plant closure. Located Great Lakes. Awaiting video and full set of photos.



Video https://youtu.be/F0rQhugrk-Q?si=W_EFOjSqHa2eBWf

Gantry Crane Trading, LLC

www.gantrytrading.com

609-263-6900

ICW= Inside Clear Width Max Hook= Maximum lift Wheelbase= Hook to Hook

Traversing Hook [GCT4108](#) **50** Tons **Shuttlelift ISL50** I.C.W. 41 Max Hook: 28 Wheelbase 33

Solid machine for plant with a staff of certified welders! Has over \$100k in new parts ready to install, low hour factory JD engine (less than one year) If you are blessed with structural steel repair talent, this machine is a home run. Great Lakes

Video



Traversing Hook [GCT4192](#) **50** Tons **MiJack 750D** I.C.W. 20'7" Max Hook: 33'1" Wheelbase 24'0"

Very nice dual trolley with spreader system handling concrete boxes, Recent annual inspection. Excellent for handling containers, tanks etc.

Video [Soon](#)



Traversing Hook [GCT4169](#) - **40** Tons **Ropco HD1080ST** I.C.W. 52 Max Hook: 40 Wheelbase 17

Been used to handle 20' shipping containers. Business switched over to forklifts. This is a industrial machine with a removable container spreader that can be discarded. Has two operator stations. Ready to work for under \$20k!

Video



Traversing Hook [GCT4166](#) **40** Tons **Drott 650C** I.C.W. 40'2" Max Hook: 32'0" Wheelbase 24'0"

*Plant closure. Working daily. **SOLD! Others available***

Video <https://youtu.be/OcSk-ZDi1K8>



Traversing Hook [GCT3970](#) **32** Tons **Drott/MiJack 650AI** I.C.W. 31'4" Max Hook: 28'10" Wheelbase 24

Good working order. Looking for offer. Plant closure. Located Great Lakes. Awaiting video and full set of photos.

Video



Traversing Hook [GCT3971](#) **32** Tons **Dortt/MiJack 650AI** I.C.W. 31'4" Max Hook: 24'10" Wheelbase 30'7"

Good working order. Looking for offer. Plant closure. Located Great Lakes. Awaiting video and full set of photos.

Video



Gantry Crane Trading, LLC

www.gantrytrading.com

609-263-6900

ICW= Inside Clear Width Max Hook= Maximum lift Wheelbase= Hook to Hook

Traversing Hook [GCT4117](#) **17** Tons **Drott/MiJack 250B** I.C.W. 24 Max Hook: 21 Wheelbase 20
Good machine. Originally from a precast yard. Then spent 10 years stationary (as in they never moved it), two years doing what it was designed to do for a rigging outfit. Ready to go. Includes pipe spreader. Video coming

Video



Rail Mount [GCT3961](#) **40** Tons **Washington Rail Mount** I.C.W. 38` Max Hook: 18'8" Wheelbase
Project complete, will be dismantled Nov-Dec 20. Recent inspection available, also all drawings etc. Located Northeast. No hour meter. Just inspected Oct 2020 all good.

Video



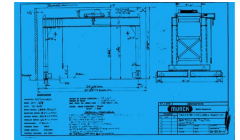
Rail Mount [GCT3684](#) **35** Tons **North American Rail Mount** I.C.W. 87' Max Hook: 24'3" Wheelbase
Four available. New in 2016 Used on one large bridge re-decking job. Now dismantled ready to go. 460v Generators are available. Call for full details!

Video http://i605.photobucket.com/albums/tt139/Gantrytrader/GCT3684_zpsto5icg.jpg



Rail Mount [GCT3588](#) **30** Tons **MUNCK Rail Mount** I.C.W. 34 Max Hook: 15'6" Wheelbase 15
Rail mounted self propelled electric single hook. Ready to ship, located near Detroit

Video



Rail Mount [GCT3820](#) **27.5** Tons **CRS Single hook track** I.C.W. 45 Max Hook: 20 Wheelbase 21'8"
Single hook track mounted diesel generator or can be wired. Used on one bridge job. New in June 2018, will be ready to ship July 2019. Extreme Climate pkg. Have full drawings also Price is for the pair, will sell separate

Video <https://youtu.be/aWY6S2mmOLg>



Non-Traversing [GCT4149 -](#) **300** Tons **Shuttlelift SL-300** I.C.W. 48 Max Hook: 31.5 Wheelbase 41.5
950 Original hours. Used for one month on one job, we sold and owner has given up waiting on permits. Properly stored by our mechanics, ready to ship and put to work.

Video



Gantry Crane Trading, LLC

www.gantrytrading.com

609-263-6900

ICW= Inside Clear Width Max Hook= Maximum lift Wheelbase= Hook to Hook

Non-Traversing [GCT4170](#) **110** Tons **ASCOM LBS 100** I.C.W. 25'4" Max Hook: 29'6" Wheelbase 29'5"
Very nice machine recently traded. Has 4 Wheel steer. Under 3000 hours

Video <https://youtu.be/dhLI4Hqo8Nc>



Non-Traversing [GCT3958](#) **100** Tons **Deal 80/8** I.C.W. 22.3 Max Hook: 31 Wheelbase
2018 Bridge segment hauler with 4500 hours. Like new. 100 ton cap

Video https://youtu.be/q2Wt_2T_RKY



Non-Traversing [GCT4171](#) **75** Tons **Marine TL 70BFM** I.C.W. 22? Max Hook: 22? Wheelbase
Nice machine out of marina. Has some of the typical rust, but nothing serious. Has Ford 300 gas power. Has adjustable lift points at all four corners. Ready to ship immediately. Dimensions not verified

Video

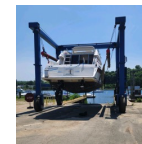


Non-Traversing [GCT4159](#) **50** Tons **Tammi** I.C.W. Max Hook: Wheelbase
Dismantled, No engine.. Could be a great deal???????

Video

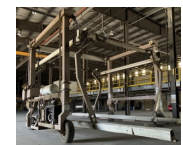
Non-Traversing [GCT4180](#) **25** Tons **Acme H25/4** I.C.W. 17 Max Hook: 18 Wheelbase 17
VERY NICE machine out of a marina. On fresh water many miles from salt. Very sweet machine! Ready to dismantle and ship tomorrow!

Video



Non-Traversing [GCT4019](#) **20** Tons **Kleeco SP400HI** I.C.W. 20 Max Hook: 20 Wheelbase 20
Never spent a night outside. Late model with only 2800 hours. Set up for LP. Used for moving modular homes. No rust anywhere, has extra hydraulic capabilities from the grapple system as well. Video is sister machine

Video



Gantry Crane Trading, LLC

www.gantrytrading.com

609-263-6900

ICW= Inside Clear Width Max Hook= Maximum lift Wheelbase= Hook to Hook

Non-Traversing [GCT4137](#)

20 Tons

Acme H20

I.C.W. 16

Max Hook: 16

Wheelbase

Nice non-traversing machine. Ready to go! Located Mid west- With spreader and cab. Handled large air conditioning units



Video

Non-Traversing [GCT4140](#)

16.5 Tons

Shuttlelift SL-15

I.C.W. 22

Max Hook: 21

Wheelbase 15

360 Original hours since new. LP Gas Ford powered. Four Hoist with factory infinitely adjustable spreaders. Powered forward spreader. Looks like new. Dimensions are confirmed



Video https://youtu.be/5elk_Uj5QuE

Non-Traversing [GCT4191](#)

15 Tons

Kleeco 15 - T

I.C.W. 15

Max Hook: 16

Wheelbase

Sweet freshwater machine with Perkins diesel power



Video <https://youtu.be/fKNP5I7-anw>