

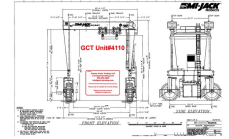
Gantry Crane Trading, LLC

www.gantrytrading.com

609-263-6900

ICW= Inside Clear Width Max Hook= Maximum lift Wheelbase= Hook to Hook

Traversing Hook [GCT4110](#) **200** Tons **MiJack MJ 200** I.C.W. 29'9" Max Hook: 36'5" Wheelbase 24'
Pricing/condition Details Coming..... Let me know you have an interest.



Video

Traversing Hook [GCT4150](#) **150** Tons **ASCOM CLS150** I.C.W. 60 Max Hook: 40'0" Wheelbase 30
(120 Under optional spreader). Volvo tier 4 power. Twin Disc PTO. Bonfiglioli wheel drives. All wheel steer (Siemens electronic). Autec wireless remote control. Full cab with heat & AC. On one project since new, ready to go winter '24



Video [Photos and video on request](#)

Traversing Hook [GCT4152](#) **100** Tons **MiJack MJ100** I.C.W. 50 Max Hook: 30 Wheelbase 24
Available November '24. Put your name on it now!



Video

Traversing Hook [GCT4121](#) **80** Tons **MiJack MJ80B** I.C.W. 71'7" Max Hook: 29'4" Wheelbase 24'
*Finishing job now, ready to ship July. Machine was a 100+ ton de-rated to 80 ton due to width... Very low hours, used to as back up to 150 ton machine. **EXCELLENT OPPORTUNITY TO BUY A BIG MIJACK FOR SHORT MONEY!***



Video <https://youtu.be/aDRmG8MEeeQ>

Traversing Hook [GCT3969](#) **50** Tons **MiJack 750D** I.C.W. 32'6" Max Hook: 24'10" Wheelbase 24'



Video

Traversing Hook [GCT4014](#) **50** Tons **MiJack 750D** I.C.W. 14'5" Max Hook: 17'4" Wheelbase 17
Dual trolley with very flexible spreader system. In very good condition, been replaced with larger machine. Video coming soon



Video https://youtu.be/eaYFLb1_9Jw

Gantry Crane Trading, LLC

www.gantrytrading.com

609-263-6900

ICW= Inside Clear Width Max Hook= Maximum lift Wheelbase= Hook to Hook

Traversing Hook [GCT4153](#) **50** Tons **Mijack 750D** I.C.W. 40 Max Hook: 25 Wheelbase 24

Very low hours on rebuilt engine. Good working order. Looking for offer. Plant closure. Located Great Lakes. Awaiting video and full set of photos.

Video https://youtu.be/F0rQhugrk-Q?si=W_EFOjSqHa2eBWf



Traversing Hook [GCT4184](#) **50** Tons **MiJack MJ50** I.C.W. 40 Max Hook: 39 Wheelbase 30

Job over, ready to ship. Very nice machine... Note #4184 & 4185 can go as a pair

Video



Traversing Hook [GCT4185](#) **50** Tons **MiJack MJ50** I.C.W. 40 Max Hook: 39 Wheelbase 30

Job over, ready to ship. dimensions to be verified. Note #4184 & 4185 can go as a pair

Video



Traversing Hook [GCT4164](#) **40** Tons **Drott 650C** I.C.W. 40'2" Max Hook: 24'2" Wheelbase 24

Vyer nice machine with fresh engine coming from a plant closure. It has a twin that is available as our unit#4166 which has an auxiliary lift.

Video https://youtu.be/jHD503_-Xos



Traversing Hook [GCT4166](#) **40** Tons **Drott 650C** I.C.W. 40'2" Max Hook: 24'2" Wheelbase 24

*Plant closure. Working daily. **Auxiliary Hoist***

Video



Traversing Hook [GCT4169 -](#) **40** Tons **Ropco HD1080ST** I.C.W. 52 Max Hook: 40 Wheelbase 17

Been used to handle 20' shipping containers in the surgarcane business. Business switched over to forklifts. This is a industrial machine with a removable container spreader that can be discarded. Has two operator stations.

Video



Gantry Crane Trading, LLC

www.gantrytrading.com

609-263-6900

ICW= Inside Clear Width Max Hook= Maximum lift Wheelbase= Hook to Hook

Traversing Hook [GCT3970](#) **32** Tons **Drott/MiJack 650AI** I.C.W. 31'4" Max Hook: 28'10" Wheelbase 24
Good working order. Looking for offer. Plant closure. Located Great Lakes. Awaiting video and full set of photos.

Video



Traversing Hook [GCT3971](#) **32** Tons **Drott/MiJack 650AI** I.C.W. 31'4" Max Hook: 24'10" Wheelbase 30'7"
Good working order. Looking for offer. Plant closure. Located Great Lakes. Awaiting video and full set of photos.

Video



Traversing Hook [GCT4100](#) **25** Tons **Drott/MiJack 500AI** I.C.W. 39'9" Max Hook: 23'10" Wheelbase 24
Selling due to business changing direction, requiring different equipment.

Video <https://youtu.be/KF-Y1SOTjGM>



Traversing Hook [GCT4117](#) **17** Tons **Drott/MiJack 250B** I.C.W. 24 Max Hook: 21 Wheelbase 20
Good machine. Originally from a precast yard. Then spent 10 years stationary (as in they never moved it), two years doing what it was designed to do for a rigging outfit. Ready to go. Includes pipe spreader. Video coming

Video



Traversing Hook [GCT4113](#) **12.5** Tons **MiJack/Drott 250AI** I.C.W. 40 Max Hook: 28 Wheelbase 24
Very nice 12.5 ton unit. In 2019-2020; New tires, engine serviced, gaskets, valve timing adjusted, rebuilt pumps, every hose replaced on machine in 2019, both hoist cables replaced, heat added to cab, set of pressure gauges, hoist brakes replaced. Receipts on everything. Manufactured panels spread system also available

Video <https://youtu.be/WwrN4ncIQb0>



Rail Mount [GCT3961](#) **40** Tons **Washington Rail Mount** I.C.W. 38' Max Hook: 18'8" Wheelbase
Project complete, will be dismantled Nov-Dec 20. Recent inspection available, also all drawings etc. Located Northeast. No hour meter. Just inspected Oct 2020 all good.

Video



Gantry Crane Trading, LLC

www.gantrytrading.com

609-263-6900

ICW= Inside Clear Width Max Hook= Maximum lift Wheelbase= Hook to Hook

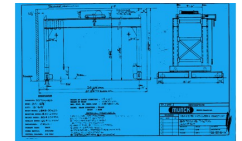
Rail Mount [GCT3684](#) **35** Tons **North American Rail Mount** [I.C.W. 87'](#) [Max Hook: 24'3"](#) [Wheelbase](#)
Four available. New in 2016 Used on one large bridge re-decking job. Now dismantled ready to go. 460v Generators are available. Call for full details!

Video http://i605.photobucket.com/albums/tt139/Gantrytrader/GCT3684_zpsto5icg.jpg



Rail Mount [GCT3588](#) **30** Tons **MUNCK Rail Mount** [I.C.W. 34](#) [Max Hook: 15'6"](#) [Wheelbase 15](#)
Rail mounted self propelled electric single hook. Ready to ship, located near Detroit

Video



Rail Mount [GCT3820](#) **27.5** Tons **CRS Single hook track** [I.C.W. 45](#) [Max Hook: 20](#) [Wheelbase 21'8"](#)
Single hook track mounted diesel generator or can be wired. Used on one bridge job. New in June 2018, will be ready to ship July 2019. Extreme Climate pkg. Have full drawings also Price is for the pair, will sell separate

Video <https://youtu.be/aWY6S2mmOLg>



Non-Traversing [GCT4149 -](#) **300** Tons **Shuttlelift SL-300** [I.C.W. 48](#) [Max Hook: 31.5](#) [Wheelbase 41.5](#)
950 Original hours. Used for one month on one job, we sold and owner has given up waiting on permits. Properly stored by our mechanics, ready to ship and put to work.

Video



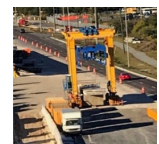
Non-Traversing [GCT4170](#) **110** Tons **ASCOM LBS 100** [I.C.W. 25'4"](#) [Max Hook: 29'6"](#) [Wheelbase 29'5"](#)
Very nice machine recently traded. Has 4 Wheel steer. Under 3000 hours

Video <https://youtu.be/dhLI4Hqo8Nc>



Non-Traversing [GCT3958](#) **100** Tons **Deal 80/8** [I.C.W. 22.3](#) [Max Hook: 31](#) [Wheelbase](#)
2018 Bridge segment hauler with 4500 hours. Like new. 100 ton cap

Video https://youtu.be/q2Wt_2T_RKY



Gantry Crane Trading, LLC

www.gantrytrading.com

609-263-6900

ICW= Inside Clear Width Max Hook= Maximum lift Wheelbase= Hook to Hook

Non-Traversing [GCT4183](#) **100** Tons **MarineTL 100BFMII** [I.C.W. 29](#) [Max Hook: 31](#) [Wheelbase](#)



Video

Non-Traversing [GCT4171](#) **75** Tons **Marine TL 70BFM** [I.C.W. 22?](#) [Max Hook: 22?](#) [Wheelbase](#)

Nice machine out of marina. Has some of the typical rust, but nothing serious. Has Ford 300 gas power. Has adjustable lift points at all four corners. Ready to ship immediately. Dimensions not verified



Video

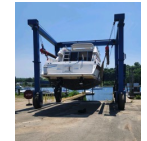
Non-Traversing [GCT4159](#) **50** Tons **Tammi** [I.C.W.](#) [Max Hook:](#) [Wheelbase](#)

Dismantled, No engine.. Could be a great deal??????

Video

Non-Traversing [GCT4180](#) **25** Tons **Acme H25/4** [I.C.W. 17](#) [Max Hook: 18](#) [Wheelbase 17](#)

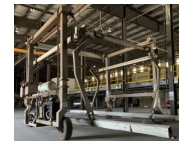
VERY NICE machine out of a marina. On fresh water many miles from salt. Very sweet machine! Ready to dismantle and ship tomorrow!



Video

Non-Traversing [GCT4019](#) **20** Tons **Kleeco SP400HI** [I.C.W. 20](#) [Max Hook: 20](#) [Wheelbase 20](#)

Never spent a night outside. Late model with only 2800 hours. Set up for LP. Used for moving modular homes. No rust anywhere, has extra hydraulic capabilities from the grapple system as well. Video is sister machine



Video

Non-Traversing [GCT4137](#) **20** Tons **Acme H20** [I.C.W. 16](#) [Max Hook: 16](#) [Wheelbase](#)

Nice non-traversing machine. Ready to go! Located Mid west- With spreader and cab. Handled large air conditioning units



Video