

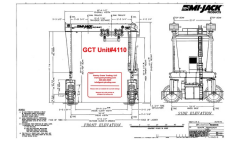
Gantry Crane Trading, LLC

www.gantrytrading.com

609-263-6900

ICW= Inside Clear Width Max Hook= Maximum lift Wheelbase= Hook to Hook

Traversing Hook [GCT4110](#) **200** Tons **MiJack MJ 200** I.C.W. 29'9" Max Hook: 36'5" Wheelbase 24'
Pricing/condition Details Coming..... Let me know you have an interest.



Video

Traversing Hook [GCT4150](#) **150** Tons **ASCOM CLS150** I.C.W. 60 Max Hook: 40'0" Wheelbase 30
(120 Under optional spreader). Volvo tier 4 power. Twin Disc PTO. Bonfiglioli wheel drives. All wheel steer (Siemens electronic). Autec wireless remote control. Full cab with heat & AC. On one project since new, ready to go winter '24



Video [Photos and video on request](#)

Traversing Hook [GCT4152](#) **100** Tons **MiJack MJ100** I.C.W. 50 Max Hook: 30 Wheelbase 24
Available November '24. Put your name on it now!



Video

Traversing Hook [GCT4121](#) **80** Tons **MiJack MJ80B** I.C.W. 71'7" Max Hook: 29'4" Wheelbase 24'
*Finishing job now, ready to ship July. Machine was a 100+ ton de-rated to 80 ton due to width... Very low hours, used to as back up to 150 ton machine. **EXCELLENT OPPORTUNITY TO BUY A BIG MIJACK FOR SHORT MONEY!***



Video <https://youtu.be/aDRmG8MEeeQ>

Traversing Hook [GCT4161](#) **70** Tons **MiJack MJ70** I.C.W. 35'5" Max Hook: 29'5" Wheelbase 30'
Located Gulf Coast



Video https://youtu.be/ILsJd_FGhxM

Traversing Hook [GCT4162](#) **70** Tons **MiJack 770D** I.C.W. 38'5" Max Hook: 33'7" Wheelbase 40
Fresh engine. Needs a decent mechanic for about a week to detail it, minor stuff. Located Gulf Coast. The 770D is the best MiJack 70 ton ever built!



Video

Gantry Crane Trading, LLC

www.gantrytrading.com

609-263-6900

ICW= Inside Clear Width Max Hook= Maximum lift Wheelbase= Hook to Hook

Traversing Hook [GCT4014](#) **50** Tons **MiJack 750D** I.C.W. 14'5" Max Hook: 17'4" Wheelbase 17

Dual trolley with very flexible spreader system. In very good condition, been replaced with larger machine.

Video coming soon

Video https://youtu.be/eaYFLb1_9Jw



Traversing Hook [GCT4153](#) **50** Tons **Mijack 750D** I.C.W. 40 Max Hook: 25 Wheelbase 24

Underutilized machine, resting. Needs a new home! Very low hours on rebuilt engine. Great Lakes, ready to ship. A great deal on a good machine!

Video https://youtu.be/F0rQhugrk-Q?si=W_EFOjSqHa2eBWf



Traversing Hook [GCT4160](#) **50** Tons **MiJack MJ50** I.C.W. 39'2" Max Hook: 28'10" Wheelbase 24

Video



Traversing Hook [GCT4164](#) **40** Tons **Drott 650C** I.C.W. 40'2" Max Hook: 24'2" Wheelbase 24

Sister Unit to machine offered.. Engine just blew, new one comes with it ready to install.

Video <http://www.youtube.com/watch?v=IWTsxNVEZ4Q4>



Traversing Hook [GCT4166](#) **40** Tons **Drott 650C** I.C.W. 40'2" Max Hook: 24'2" Wheelbase 24

*Sister Unit to machine offered.. Working daily. **Auxiliary Hoist***

Video <http://www.youtube.com/watch?v=IWTsxNVEZ4Q4>



Traversing Hook [GCT4133](#) **30** Tons **MiJack MJ30** I.C.W. 29'9" Max Hook: 29'11" Wheelbase 19'

*Dual Trolley machine. Out of equipment manufacturer, not out of concrete industry, very clean. Available Summer 2024, put your name on it now! **UNDER CONTRACT***

Video **Waiting**



Gantry Crane Trading, LLC

www.gantrytrading.com

609-263-6900

ICW= Inside Clear Width Max Hook= Maximum lift Wheelbase= Hook to Hook

Traversing Hook [GCT4100](#) **25** Tons **Drott/MiJack 500AI** I.C.W. 39'9" Max Hook: 23'10" Wheelbase 24
Selling due to business changing direction, requiring different equipment.

Video <https://youtu.be/KF-Y1SOTjGM>



Traversing Hook [GCT4117](#) **17** Tons **Drott/MiJack 250B** I.C.W. 24 Max Hook: 21 Wheelbase 20
Good machine. Originally from a precast yard. Then spent 10 years stationary (as in they never moved it), two years doing what it was designed to do for a rigging outfit. Ready to go. Includes pipe spreader. Video coming

Video



Traversing Hook [GCT4113](#) **12.5** Tons **MiJack/Drott 250AI** I.C.W. 40 Max Hook: 28 Wheelbase 24
Very nice 12.5 ton unit. In 2019-2020; New tires, engine serviced, gaskets, valve timing adjusted, rebuilt pumps, every hose replaced on machine in 2019, both hoist cables replaced, heat added to cab, set of pressure gauges, hoist brakes replaced. Receipts on everything. Manufactured panels spread system also available

Video <https://youtu.be/WwrN4ncIQb0>



Rail Mount [GCT3961](#) **40** Tons **Washington Rail Mount** I.C.W. 38' Max Hook: 18'8" Wheelbase
Project complete, will be dismantled Nov-Dec 20. Recent inspection available, also all drawings etc. Located Northeast. No hour meter. Just inspected Oct 2020 all good.

Video



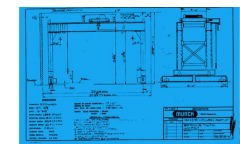
Rail Mount [GCT3684](#) **35** Tons **North American Rail Mount** I.C.W. 87' Max Hook: 24'3" Wheelbase
Four available. New in 2016 Used on one large bridge re-decking job. Now dismantled ready to go. 460v Generators are available. Call for full details!

Video http://i605.photobucket.com/albums/tt139/Gantrytrader/GCT3684_zpsto5icg.jpg



Rail Mount [GCT3588](#) **30** Tons **MUNCK Rail Mount** I.C.W. 34 Max Hook: 15'6" Wheelbase 15
Rail mounted self propelled electric single hook. Ready to ship, located near Detroit

Video



Gantry Crane Trading, LLC

www.gantrytrading.com

609-263-6900

ICW= Inside Clear Width Max Hook= Maximum lift Wheelbase= Hook to Hook

Rail Mount [GCT3820](#) **27.5** Tons **CRS Single hook track** [I.C.W. 45](#) [Max Hook: 20](#) [Wheelbase 21'8"](#)

Single hook track mounted diesel generator or can be wired. Used on one bridge job. New in June 2018, will be ready to ship July 2019. Extreme Climate pkg. Have full drawings also Price is for the pair, will sell separate

Video <https://youtu.be/aWY6S2mmOLg>



Non-Traversing [GCT4149 -](#) **300** Tons **Shuttlelift SL-300** [I.C.W. 48](#) [Max Hook: 31.5](#) [Wheelbase 41.5](#)

950 Original hours. Used for one month on one job, we sold and owner has given up waiting on permits. Properly stored by our mechanics, ready to ship and put to work.

Video



Non-Traversing [GCT4069](#) **150** Tons **MarineTL 150AMO** [I.C.W. 26](#) [Max Hook: 30](#) [Wheelbase 32](#)

*Beautiful 150AMO Travelift. Recent Caterpillar repower. Great condition, available August/September 22.. Located Northeast US **SOLD - ANOTHER COMING AVAILABLE IN JANUARY 23***

Video



Non-Traversing [GCT4104](#) **150** Tons **MarineTL 150AMO** [I.C.W. 27'?](#) [Max Hook: 30?](#) [Wheelbase 32?](#)

Nice government surplus machine. Repainted five years ago. Engine has 80 hours.

Video <http://youtu.be/-dQnM5-ZwMk>



Non-Traversing [GCT4157](#) **102** Tons **ASCOM 80 Special** [I.C.W. 24](#) [Max Hook: 30](#) [Wheelbase 27'11"](#)

300 hours on new Ivecco, less than 3000 on machine. Wireless remote control. 4 Wheel Steer. Load gauges. Four ADJUSTABLE sling blocks.

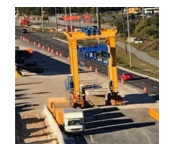
Video



Non-Traversing [GCT3958](#) **100** Tons **Deal 80/8** [I.C.W. 22.3](#) [Max Hook: 31](#) [Wheelbase](#)

2018 Bridge segment hauler with 4500 hours. Like new. 100 ton cap

Video https://youtu.be/q2Wt_2T_RKY



Gantry Crane Trading, LLC

www.gantrytrading.com

609-263-6900

ICW= Inside Clear Width Max Hook= Maximum lift Wheelbase= Hook to Hook

Non-Traversing [GCT4135](#) **100** Tons **MarineTL 100BFM** I.C.W. 25'6" Max Hook: 31 Wheelbase 30
New machine just delivered. Very well maintained Good condition, operated daily

Video <https://www.youtube.com/watch?v=0FjyUYy1708>



Non-Traversing [GCT4027](#) **75** Tons **Acme H75/4** I.C.W. 22 Max Hook: 22 Wheelbase
Acme H75/4 Ford 429 rebuilt in 2020, easy to convert to LP. Also new rope, hoses, paint .
UNDER CONTRACT SOLD! But have others coming up

Video <https://youtu.be/BC0yeC4LFEI>



Non-Traversing [GCT4147](#) **70** Tons **MarineTL 70BFM** I.C.W. 23' Max Hook: 24' Wheelbase
Non-traversing machine out of a boat yard. Under 1000hrs on on Ford 6cyl & new tires.

Video



Non-Traversing [GCT4163](#) **60** Tons **Acme H60/4** I.C.W. 20 Max Hook: 22 Wheelbase 20
Solid machine with recent John Deere diesel and a removable jib crane. Working every day. Dimensions not verified

Video



Non-Traversing [GCT4068](#) **55** Tons **ASCOM BHT 50** I.C.W. 19'7" Max Hook: 25'6" Wheelbase 24'6"
Four wheel steer, radio remote control, four independent winches, load scales, Iveco diesel 72kW.. Sweet machine located our plant. Price is FOB anywhere in lower 48 states. 30 Day delivery.

Video



Non-Traversing [GCT4078](#) **50** Tons **ASCOM SPE-50** I.C.W. 11 Max Hook: 17'9" Wheelbase 16
Awaiting some final details. Very special machine, used during construction of new plant. All wheel steer, all wheel drive, remote control, LP gas power, lifting is done with hydraulic cylinders rather than winches.

Video



Gantry Crane Trading, LLC

www.gantrytrading.com

609-263-6900

ICW= Inside Clear Width Max Hook= Maximum lift Wheelbase= Hook to Hook

Non-Traversing [GCT4132](#) **50** Tons **Acme H50/4** [I.C.W. 20](#) [Max Hook: 20](#) [Wheelbase 20](#)

Decent machine that looks bad because it needs a welder to spend a day, and a paint job! On the good side, everything works as it should, the only money you'll need to spend on it is to make her pretty

Video <https://youtu.be/OQGLXJLHc7g>



Non-Traversing [GCT4143-](#) **50** Tons **Shuttlelift SL50II** [I.C.W. 21](#) [Max Hook: 20](#) [Wheelbase 21](#)

*2500 Hours. Tier 3 diesel, Four Wheel Steer, Four Wheel Drive, Two speed hoists and drive, remote control. 10% Gradability. **SOLD***

Video <https://youtu.be/3bgiXqOItFI> **New video -** <https://youtu.be/Z4uEErN5T2c>



Non-Traversing [GCT4159](#) **50** Tons **Tammi** [I.C.W.](#) [Max Hook:](#) [Wheelbase](#)

Dismantled, No engine.. Could be a great deal???????

Video

Non-Traversing [GCT4158](#) **35** Tons **MarineTL 35BFM** [I.C.W. 18](#) [Max Hook: 18](#) [Wheelbase 18](#)

Beautiful 35 ton machine with power sling adjustmen, fresh paint, four winch, load gauges, ready to go. New machine arrived, won't last, too nice!

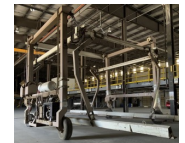
Video



Non-Traversing [GCT4019](#) **20** Tons **Kleeco SP400HI** [I.C.W. 20](#) [Max Hook: 20](#) [Wheelbase 20](#)

Never spent a night outside. Late model with only 2800 hours. Set up for LP. Used for moving modular homes. No rust anywhere, has extra hydraulic capabilities from the grapple system as well. Video is sister machine

Video <http://youtu.be/ekwzfcKSqyk>



Non-Traversing [GCT4137](#) **20** Tons **Acme H20** [I.C.W. 16](#) [Max Hook: 16](#) [Wheelbase](#)

Nice non-traversing machine. Ready to go! Located Mid west- With spreader and cab. Handled large air conditioning units

Video



Gantry Crane Trading, LLC

www.gantrytrading.com

609-263-6900

ICW= Inside Clear Width Max Hook= Maximum lift Wheelbase= Hook to Hook

Non-Traversing [GCT4140](#)

16.5 Tons

Shuttlelift SL-15

I.C.W. 22

Max Hook: 21

Wheelbase 15

360 Original hours since new. LP Gas Ford powered. Four Hoist with factory infinitely adjustable spreaders. Powered forward spreader. Looks like new. Dimensions are confirmed

Video https://youtu.be/5elk_Uj5QuE

