

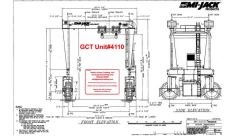
Gantry Crane Trading, LLC

www.gantrytrading.com

609-263-6900

ICW= Inside Clear Width Max Hook= Maximum lift Wheelbase= Hook to Hook

Traversing Hook [GCT4110](#) **200** Tons **MiJack MJ 200** I.C.W. 29'9" Max Hook: 36'5" Wheelbase 24'
Pricing/condition Details Coming..... Let me know you have an interest.



Video

Traversing Hook [GCT4121](#) **80** Tons **MiJack MJ80B** I.C.W. 71'7" Max Hook: 29'4" Wheelbase 24'
*Finishing job now, ready to ship July. Machine was a 100+ ton de-rated to 80 ton due to width... Very low hours, used to as back up to 150 ton machine. **EXCELLENT OPPORTUNITY TO BUY A BIG MiJACK FOR SHORT MONEY!***



Video <https://youtu.be/aDRmG8MEeeQ>

Traversing Hook [GCT4119](#) **70** Tons **MiJack 770D** I.C.W. 48'6" Max Hook: 33'6" Wheelbase 40'
*Just listed. Photos and videos on request. Located SE ready to ship now. **SOLD - Another coming in Jan 24***



Video https://youtu.be/TWv_ozTP5_U

Traversing Hook [GCT4014](#) **50** Tons **MiJack 750D** I.C.W. 14'5" Max Hook: 17'4" Wheelbase 17'
Dual trolley with very flexible spreader system. In very good condition, been replaced with larger machine. Video coming soon



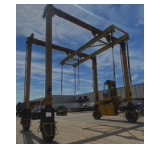
Video https://youtu.be/eaYFLb1_9Jw

Traversing Hook [GCT4002](#) **30** Tons **Mi-Jack 500B** I.C.W. 40' Max Hook: 27' Wheelbase 20'
Used to load oil field products. Raised Cab (easy to lower). Nice machine, everything in good working order, has raised cab. Owner has replaced it with a larger remote control unit. Has not been used much in the last two years



Video <https://youtu.be/kmSH0ly-B0c>

Traversing Hook [GCT4133](#) **30** Tons **MiJack MJ30** I.C.W. 29'9" Max Hook: 29'11" Wheelbase 19'
Dual Trolley machine. Out of equipment manufacturer, not out of concrete industry, very clean. Available Spring 2024, put your name on it now!



Video [Waiting](#)

Gantry Crane Trading, LLC

www.gantrytrading.com

609-263-6900

ICW= Inside Clear Width Max Hook= Maximum lift Wheelbase= Hook to Hook

Traversing Hook [GCT4100](#) **25** Tons **Drott/MiJack 500AI** I.C.W. 39'9" Max Hook: 23'10" Wheelbase 24
Selling due to business changing direction, requiring different equipment.



Video <https://youtu.be/KF-Y1SOTjGM>

Traversing Hook [GCT4117](#) **17** Tons **Drott/MiJack 250B** I.C.W. 24 Max Hook: 21 Wheelbase 20
Good machine. Originally from a precast yard. Then spent 10 years stationary (as in they never moved it), two years doing what it was designed to do for a rigging outfit. Ready to go. Includes pipe spreader. Video coming



Video

Traversing Hook [GCT4113](#) **12.5** Tons **MiJack/Drott 250AI** I.C.W. 40 Max Hook: 28 Wheelbase 24
Very nice 12.5 ton unit. In 2019-2020; New tires, engine serviced, gaskets, valve timing adjusted, rebuilt pumps, every hose replaced on machine in 2019, both hoist cables replaced, heat added to cab, set of pressure gauges, hoist brakes replaced. Receipts on everything. Manufactured panels spread system also available



Video <https://youtu.be/WwrN4nclQb0>

Rail Mount [GCT3961](#) **40** Tons **Washington Rail Mount** I.C.W. 38' Max Hook: 18'8" Wheelbase
Project complete, will be dismantled Nov-Dec 20. Recent inspection available, also all drawings etc. Located Northeast. No hour meter. Just inspected Oct 2020 all good.



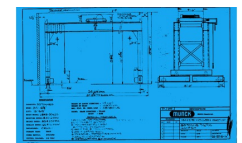
Video

Rail Mount [GCT3684](#) **35** Tons **North American Rail Mount** I.C.W. 87' Max Hook: 24'3" Wheelbase
Four available. New in 2016 Used on one large bridge re-decking job. Now dismantled ready to go. 460v Generators are available. Call for full details!



Video http://i605.photobucket.com/albums/tt139/Gantrytrader/GCT3684_zpsto5icg.jpg

Rail Mount [GCT3588](#) **30** Tons **MUNCK Rail Mount** I.C.W. 34 Max Hook: 15'6" Wheelbase 15
Rail mounted self propelled electric single hook. Ready to ship, located near Detroit



Video

Gantry Crane Trading, LLC

www.gantrytrading.com

609-263-6900

ICW= Inside Clear Width Max Hook= Maximum lift Wheelbase= Hook to Hook

Rail Mount [GCT3820](#) **27.5** Tons **CRS Single hook track** I.C.W. 45 Max Hook: 20 Wheelbase 21'8"

Single hook track mounted diesel generator or can be wired. Used on one bridge job. New in June 2018, will be ready to ship July 2019. Extreme Climate pkg. Have full drawings also Price is for the pair, will sell separate



Video <https://youtu.be/aWY6S2mmOLg>

Non-Traversing [GCT4149](#) - **300** Tons **Shuttlelift SL-300** I.C.W. 48 Max Hook: 31.5 Wheelbase 41.5

950 Original hours. Used for one month on one job, we sold and owner has given up waiting on permits. Properly stored by our mechanics, ready to ship and put to work.



Video

Non-Traversing [GCT4069](#) **150** Tons **MarineTL 150AMO** I.C.W. 26 Max Hook: 30 Wheelbase 32

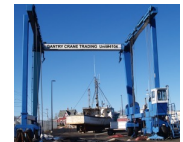
*Beautiful 150AMO Travelift. Recent Caterpillar repower. Great condition, available August/September 22.. Located Northeast US **SOLD - ANOTHER COMING AVAILABLE IN JANUARY 23***



Video

Non-Traversing [GCT4104](#) **150** Tons **MarineTL 150AMO** I.C.W. 27'? Max Hook: 30? Wheelbase 32?

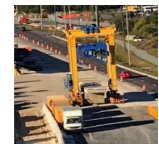
Nice government surplus machine. Repainted five years ago. Engine has 80 hours.



Video <http://youtu.be/-dQnM5-ZwMk>

Non-Traversing [GCT3958](#) **100** Tons **Deal 80/8** I.C.W. 22.3 Max Hook: 31 Wheelbase

2018 Bridge segment hauler with 4500 hours. Like new. 100 ton cap



Video https://youtu.be/q2Wt_2T_RKY

Non-Traversing [GCT4135](#) **100** Tons **MarineTL 100BFM** I.C.W. 25'6" Max Hook: 31 Wheelbase 30

New machine just delivered. Very well maintained Good condition, operated daily



Video <https://www.youtube.com/watch?v=0FjyUYy1708>

Gantry Crane Trading, LLC

www.gantrytrading.com

609-263-6900

ICW= Inside Clear Width Max Hook= Maximum lift Wheelbase= Hook to Hook

Non-Traversing [GCT4027](#) **75** Tons **Acme H75/4** I.C.W. 22 Max Hook: 22 Wheelbase

Acme H75/4 Ford 429 rebuilt in 2020, easy to convert to LP. Also new rope, hoses, paint.

UNDER CONTRACT SOLD! But have others coming up

Video <https://youtu.be/BC0yeC4LFEI>



Non-Traversing [GCT4147](#) **70** Tons **MarineTL 70BFM** I.C.W. 23' Max Hook: 24' Wheelbase

Non-traversing machine out of a boat yard. Under 1000hrs on on Ford 6cyl & new tires.

Video



Non-Traversing [GCT3950](#) **60** Tons **Kleeco 1200U** I.C.W. 20 Max Hook: 21 Wheelbase 21

Nice machine that has been back up unit owners now ready to part with. Perkins diesel power. Four hoist. 24' Spreader Beams. Needs nothing, been painted frequently by its original owner. Recent tires.

Video <https://youtu.be/vGh0eZq4g5w>



Non-Traversing [GCT4068](#) **55** Tons **ASCOM BHT 50** I.C.W. 19'7" Max Hook: 25'6" Wheelbase 24'6"

Four wheel steer, radio remote control, four independent winches, load scales, Iveco diesel 72kW.. Sweet machine located our plant. Price is FOB anywhere in lower 48 states. 30 Day delivery.

Video



Non-Traversing [GCT4078](#) **50** Tons **ASCOM SPE-50** I.C.W. 11 Max Hook: 17'9" Wheelbase 16

Awaiting some final details. Very special machine, used during construction of new plant. All wheel steer, all wheel drive, remote control, LP gas power, lifting is done with hydraulic cylinders rather than winches.

Video



Non-Traversing [GCT4132](#) **50** Tons **Acme H50/4** I.C.W. 20 Max Hook: 20 Wheelbase 20

Decent machine that looks bad because it needs a welder to spend a day, and a paint job! On the good side, everything works as it should, the only money you'll need to spend on it is to make her pretty

Video <https://youtu.be/OQGLXJLHc7g>



Gantry Crane Trading, LLC

www.gantrytrading.com

609-263-6900

ICW= Inside Clear Width Max Hook= Maximum lift Wheelbase= Hook to Hook

Non-Traversing [GCT4143-](#) **50** Tons **Shuttlelift SL50II** [I.C.W. 21](#) [Max Hook: 20](#) [Wheelbase 21](#)
2500 Hours. Tier 3 diesel, Four Wheel Steer, Four Wheel Drive, Two speed hoists and drive, remote control. 10% Gradability.



Video <https://youtu.be/3bgiXqOltFI> **New video -** <https://youtu.be/Z4uEErN5T2c>

Non-Traversing [GCT4115](#) **25** Tons **Acme H25/4** [I.C.W. 17](#) [Max Hook: 18](#) [Wheelbase 17](#)
VERY NICE machine out of a marina. On fresh water 90 miles from salt. Has mostly new hoses, engine rebuilt in 2021 Very sweet machine! Ready to dismantle and ship tomorrow!



Video <https://youtu.be/ddA9TQ-Oidc>

Non-Traversing [GCT4019](#) **20** Tons **Kleeco SP400HI** [I.C.W. 20](#) [Max Hook: 20](#) [Wheelbase 20](#)
Never spent a night outside. Late model with only 2800 hours. Set up for LP. Used for moving modular homes. No rust anywhere, has extra hydraulic capabilities from the grapple system as well. Video is sister machine



Video <http://youtu.be/ekwzfcKSqyk>

Non-Traversing [GCT4137](#) **20** Tons **Acme H20** [I.C.W. 16](#) [Max Hook: 16](#) [Wheelbase](#)
Nice non-traversing machine. Ready to go! Located Mid west- With spreader and cab. Handled large air conditioning units



Video

Non-Traversing [GCT4140](#) **16.5** Tons **Shuttlelift SL-15** [I.C.W. 22](#) [Max Hook: 21](#) [Wheelbase 15](#)
360 Original hours since new. LP Gas Ford powered. Four Hoist with factory infinitely adjustable spreaders. Powered forward spreader. Looks like new. Dimensions are confirmed



Video https://youtu.be/5elk_Uj5QuE